

Figure 1, Scan that shows the difference in elevation. Channel depth = 4 cm, 0 pumps contour current.

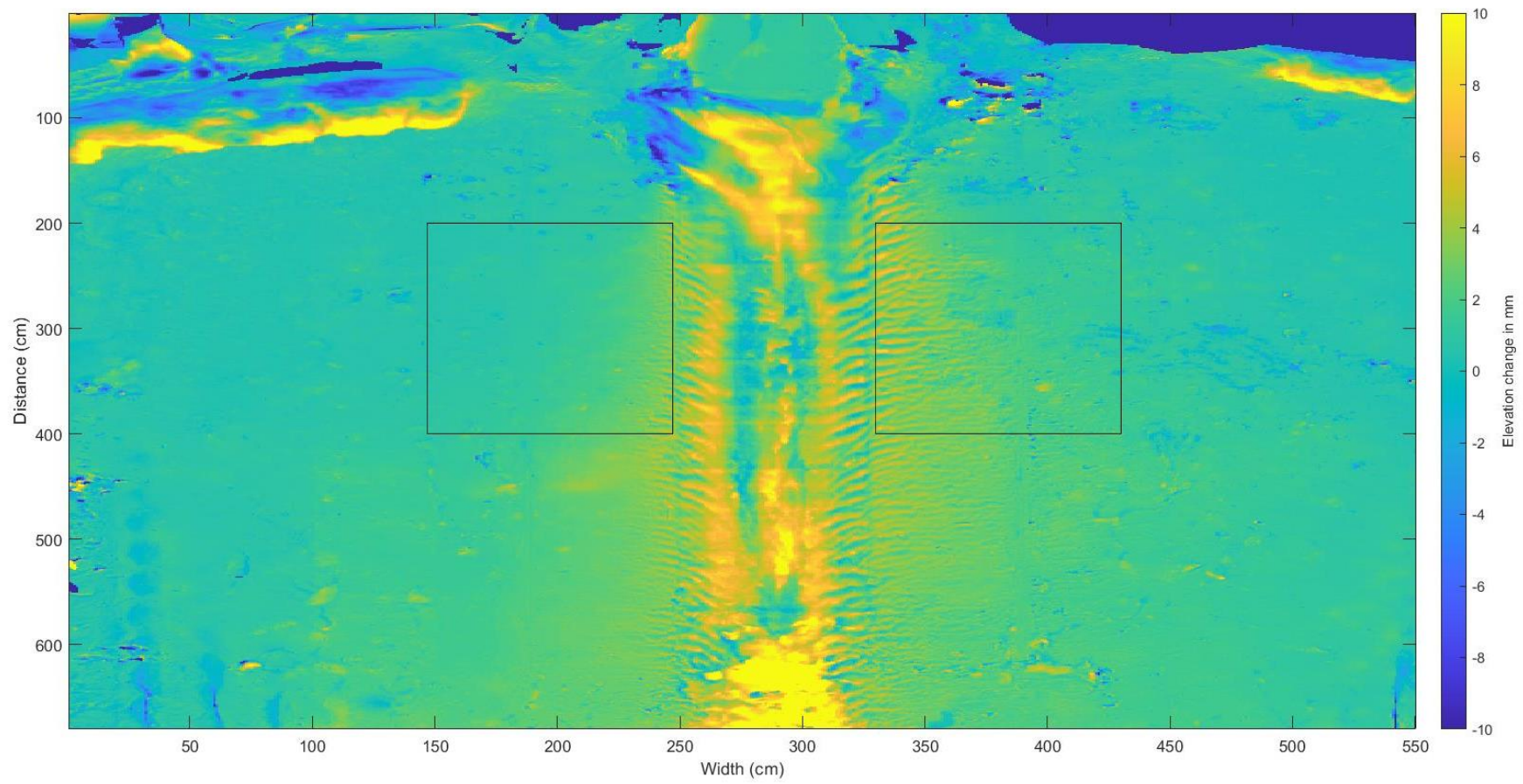


Figure 2, Scan that shows the difference in elevation. Channel depth = 4 cm, 1 pump contour current.

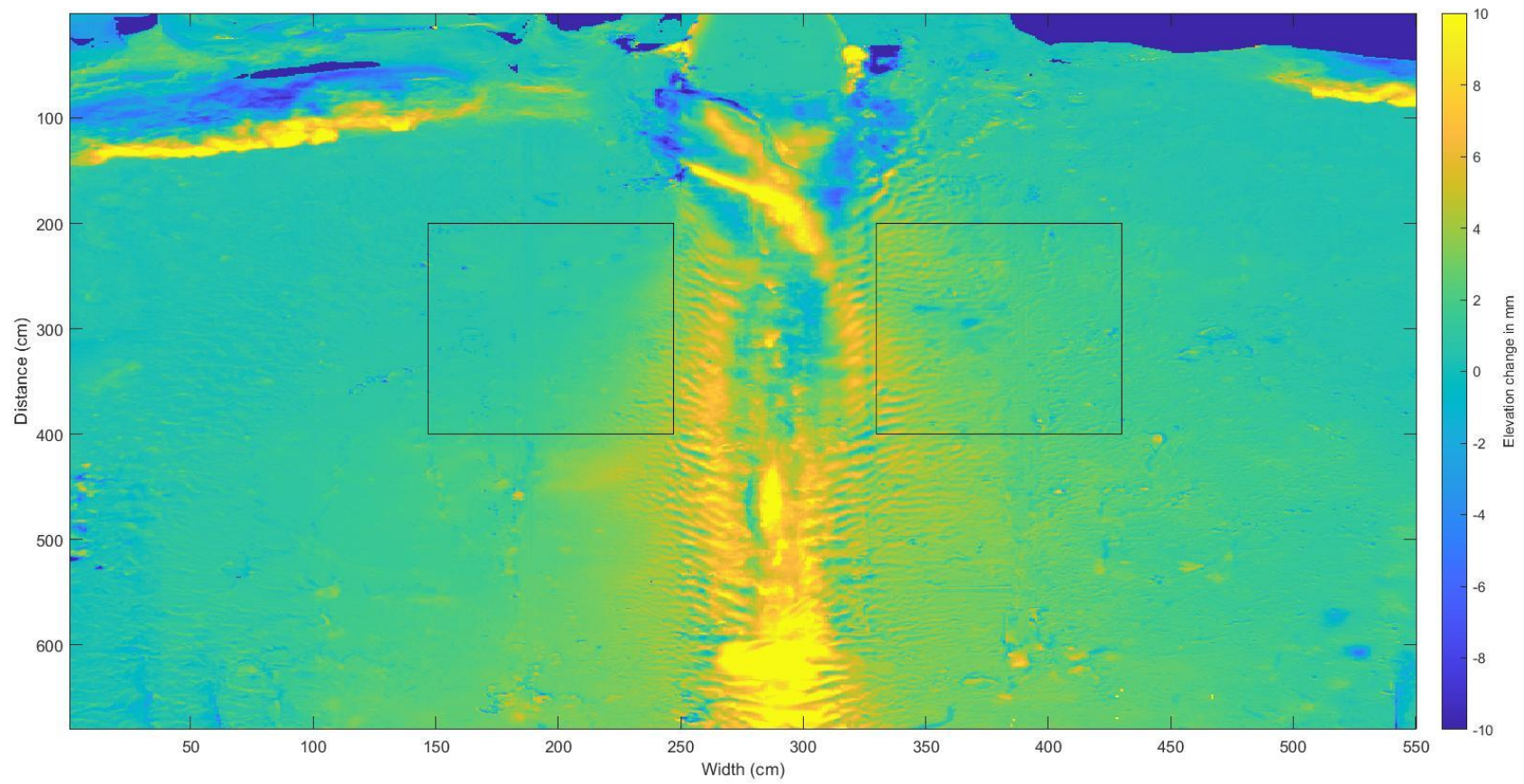


Figure 3, Scan that shows the difference in elevation. Channel depth = 4 cm, 2 pumps contour current.

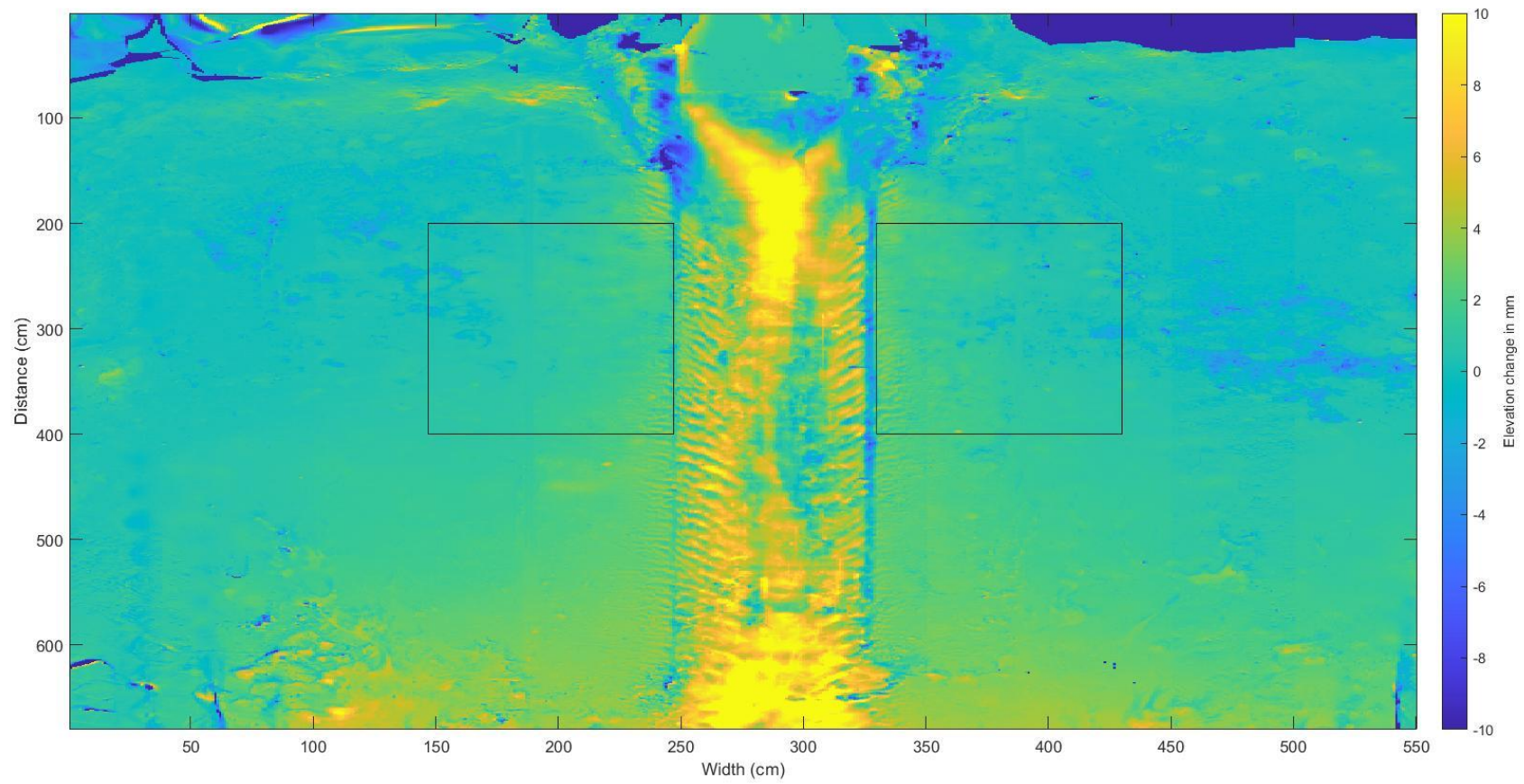


Figure 4, Scan that shows the difference in elevation. Channel depth = 7 cm, 0 pumps contour current.

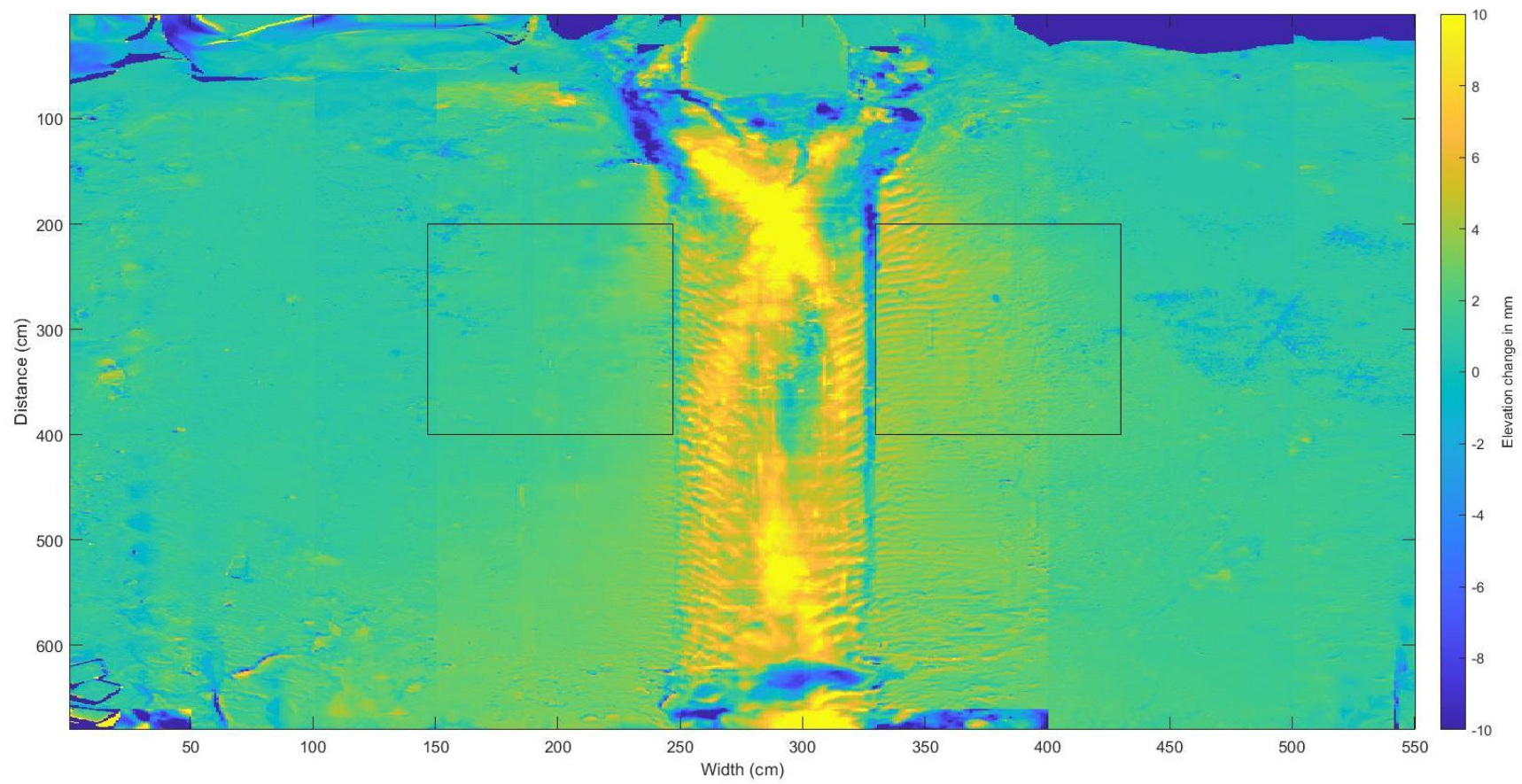


Figure 5, Scan that shows the difference in elevation. Channel depth = 7 cm, 1 pump contour current.

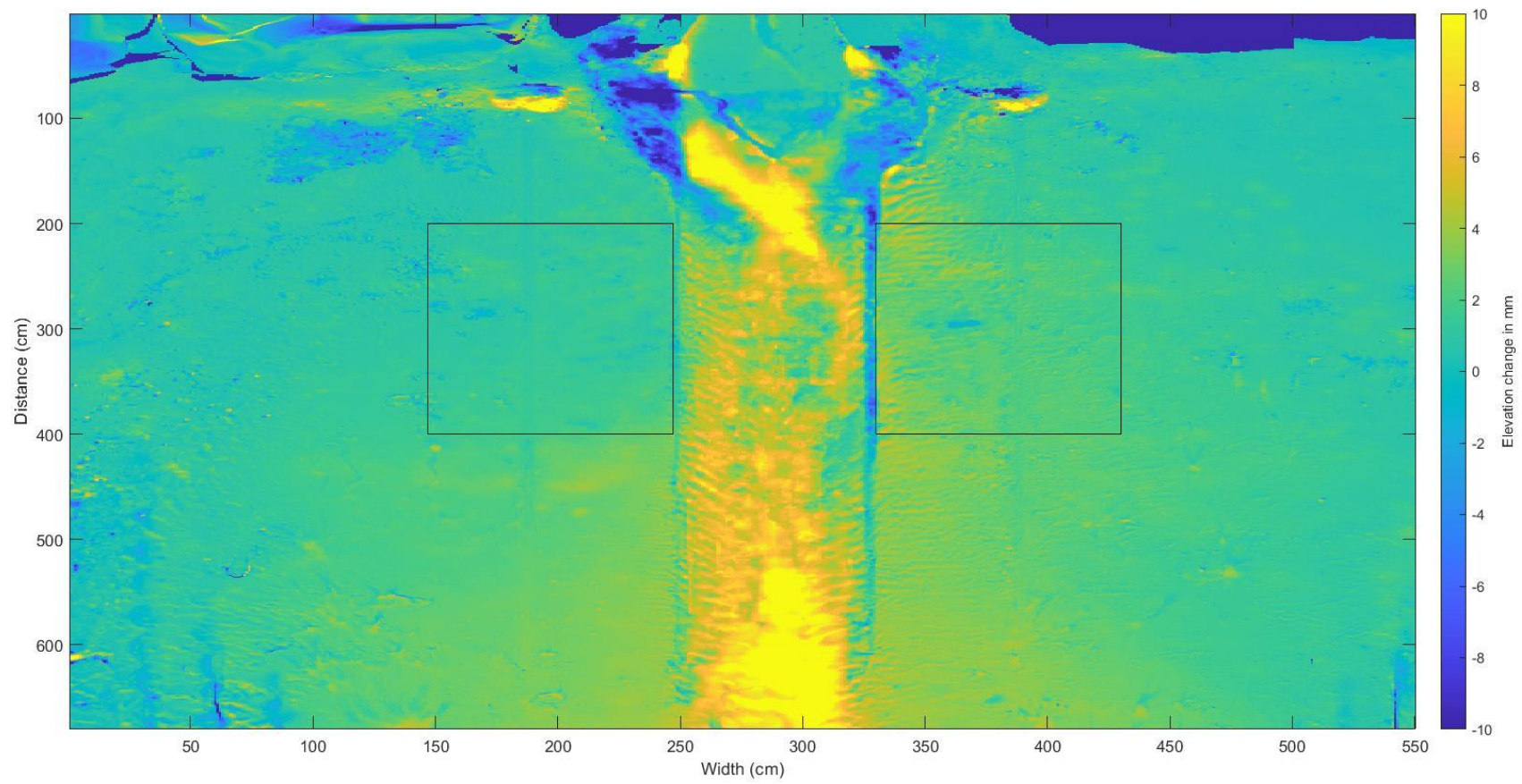


Figure 6 Scan that shows the difference in elevation. Channel depth = 7 cm, 2 pumps contour current.

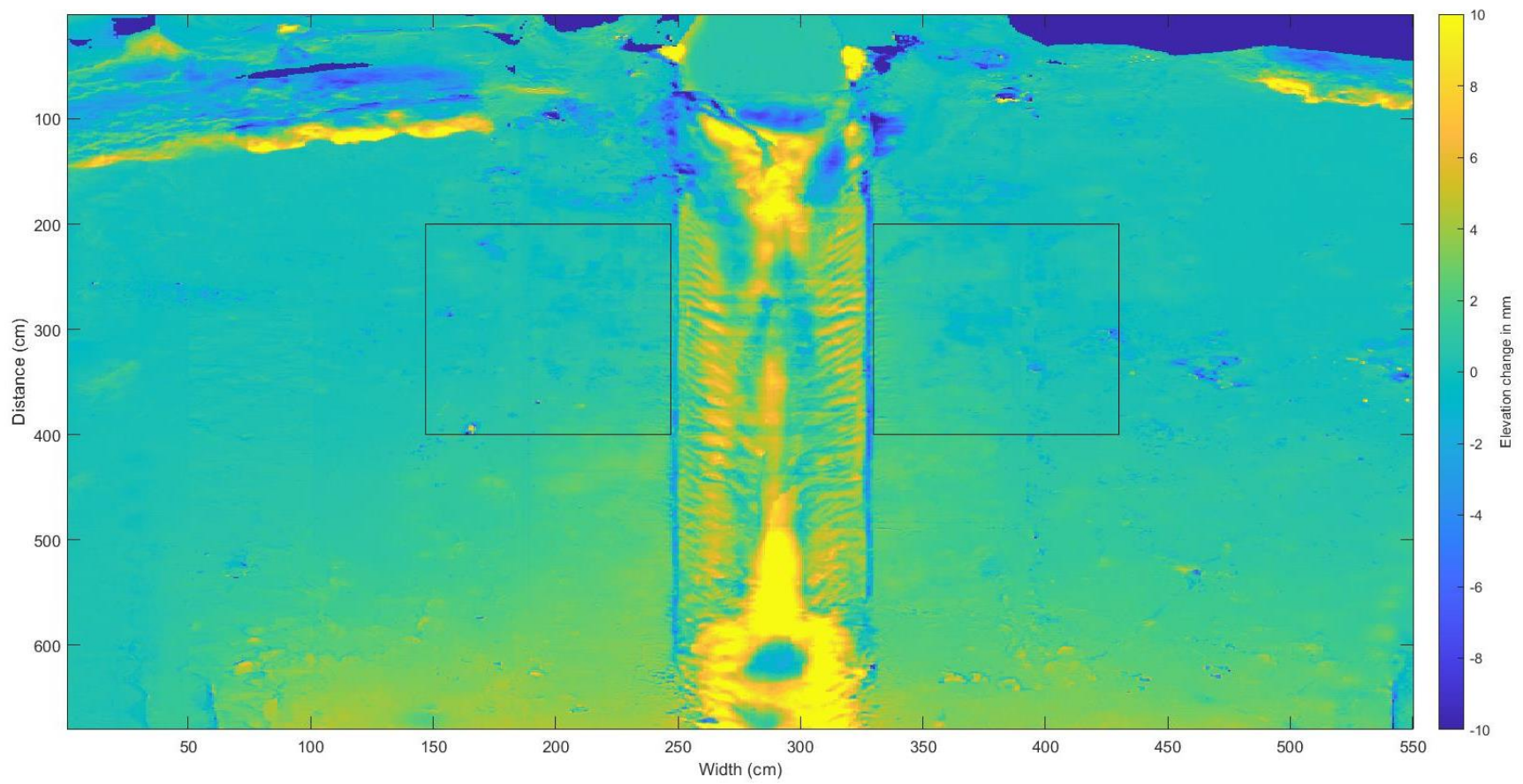


Figure 7, Scan that shows the difference in elevation. Channel depth = 10 cm, 0 pumps contour current.

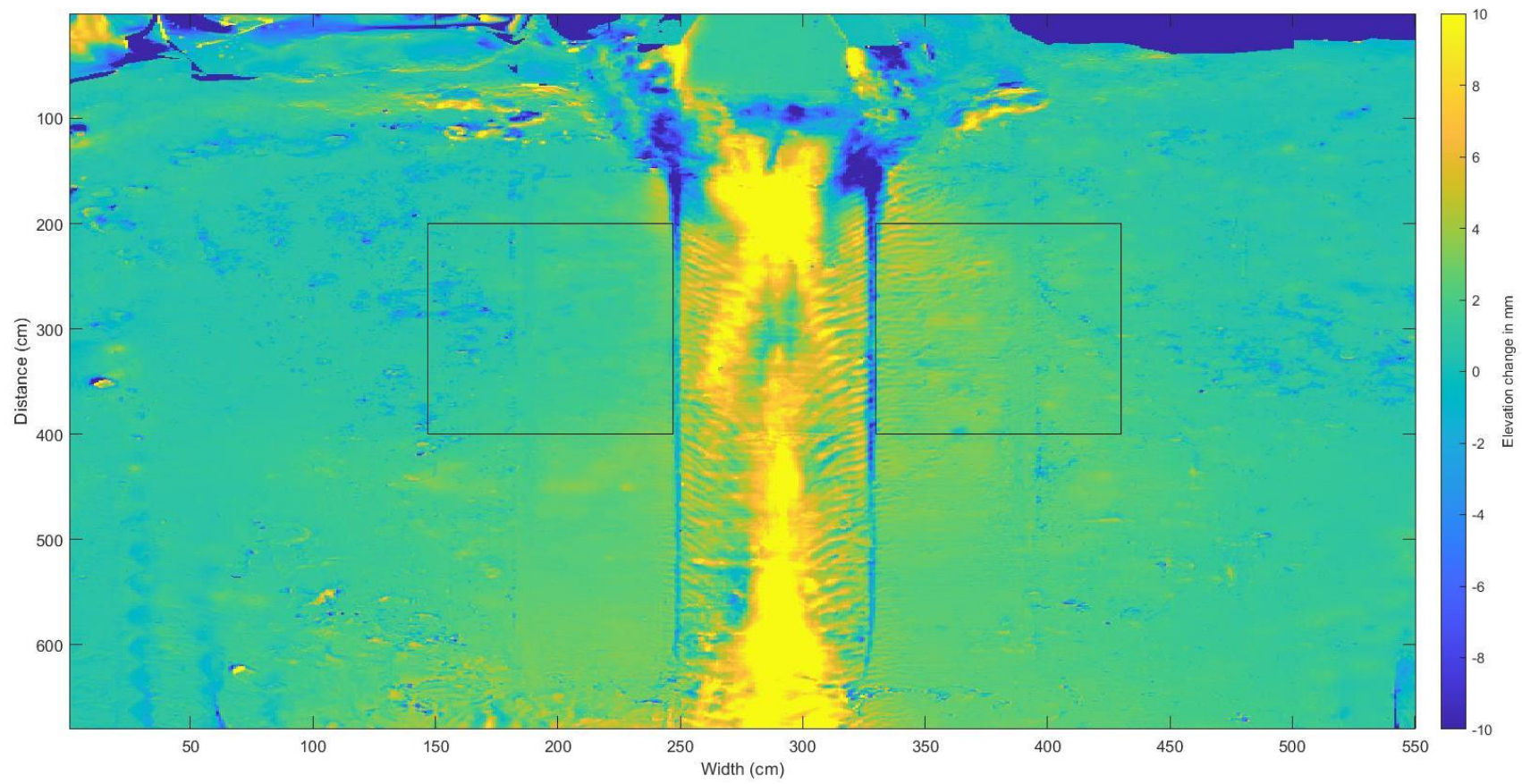


Figure 8, Scan that shows the difference in elevation. Channel depth = 10 cm, 1 pump contour current.



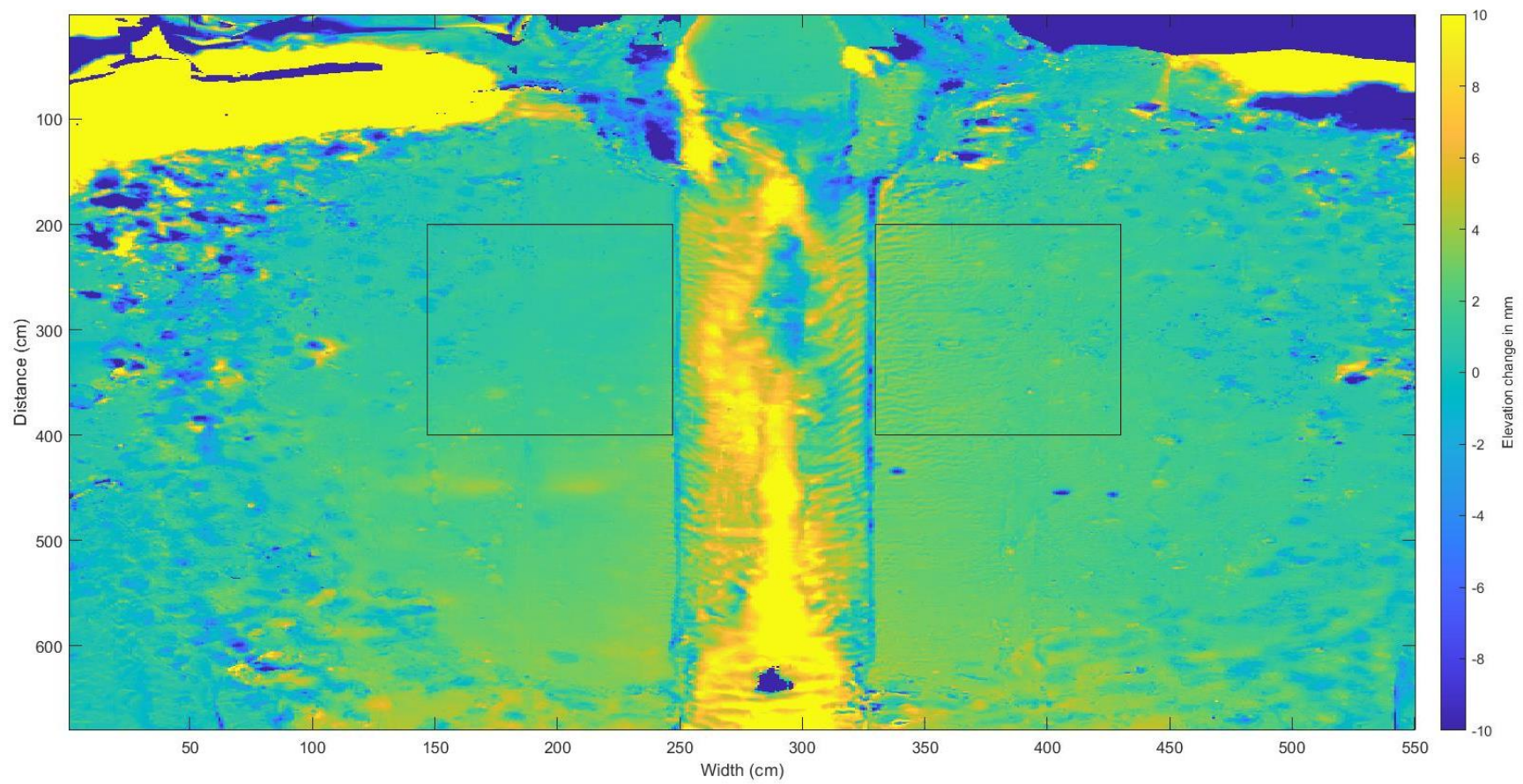


Figure 9 Scan that shows the difference in elevation. Channel depth = 10 cm, 2 pumps contour current.

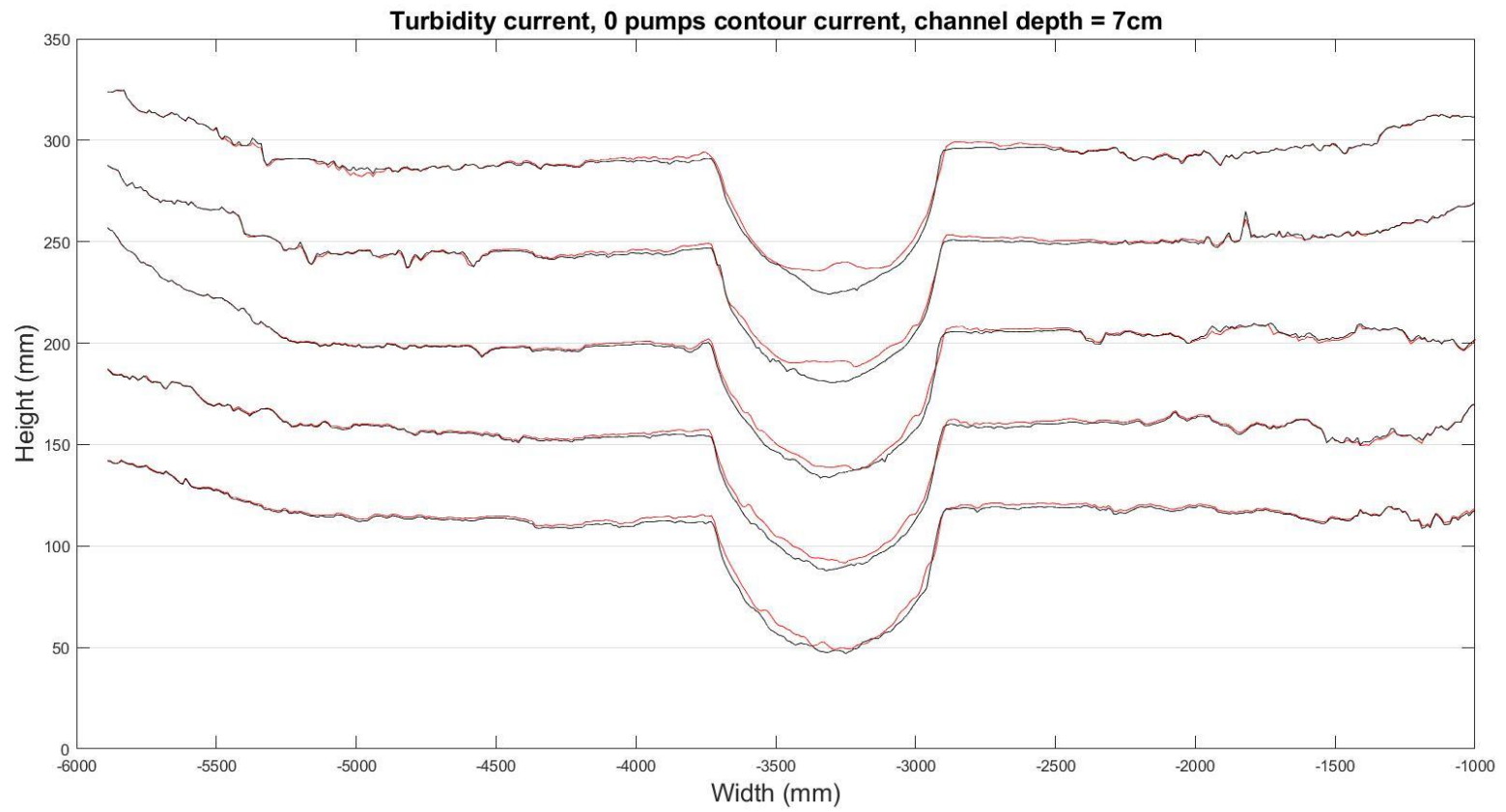


Figure 10, cross section of experiment without contour current and channel depth of 7 cm.

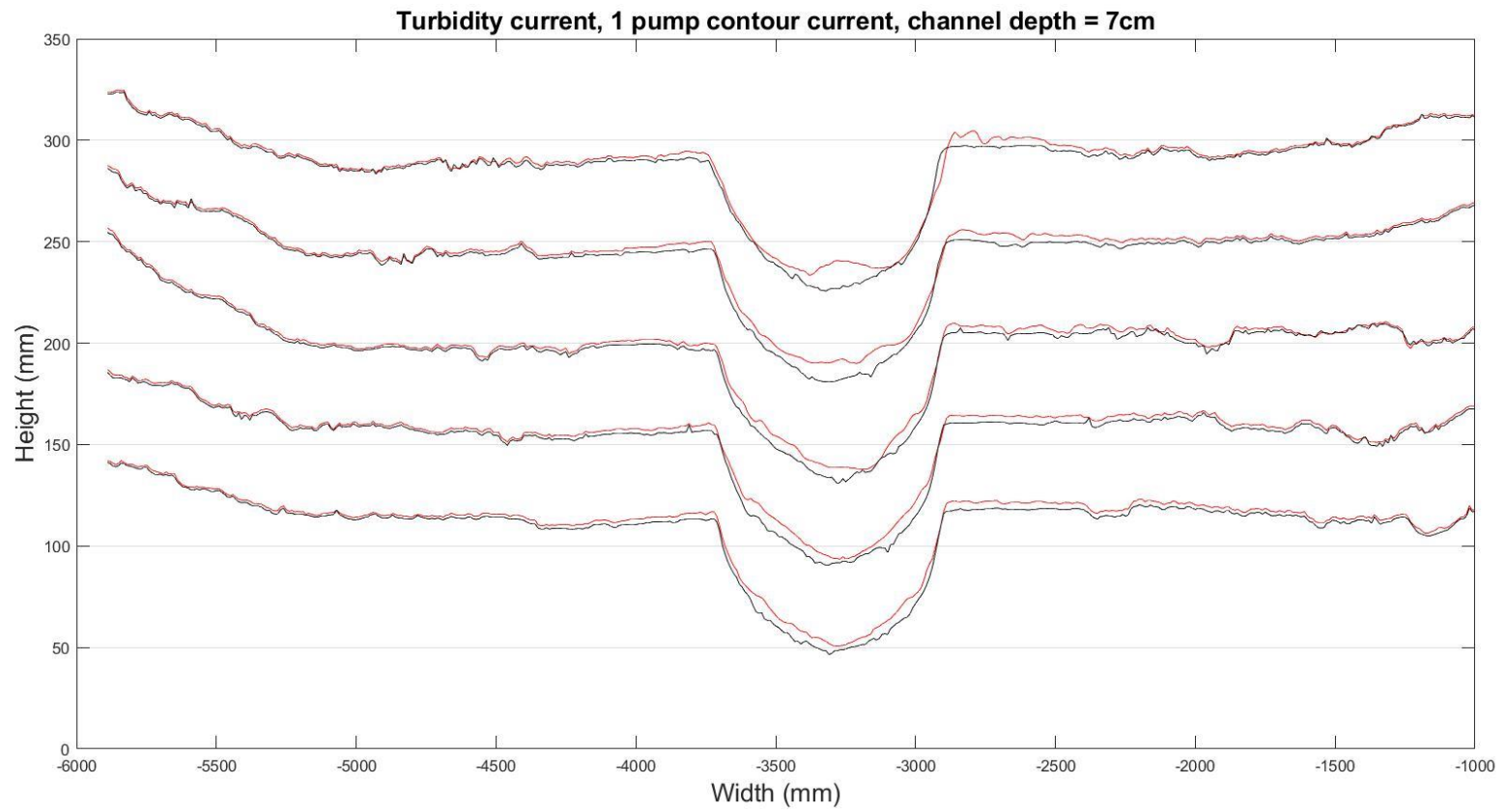


Figure 11, cross section of experiment with 1 pump contour current and channel depth of 7 cm.

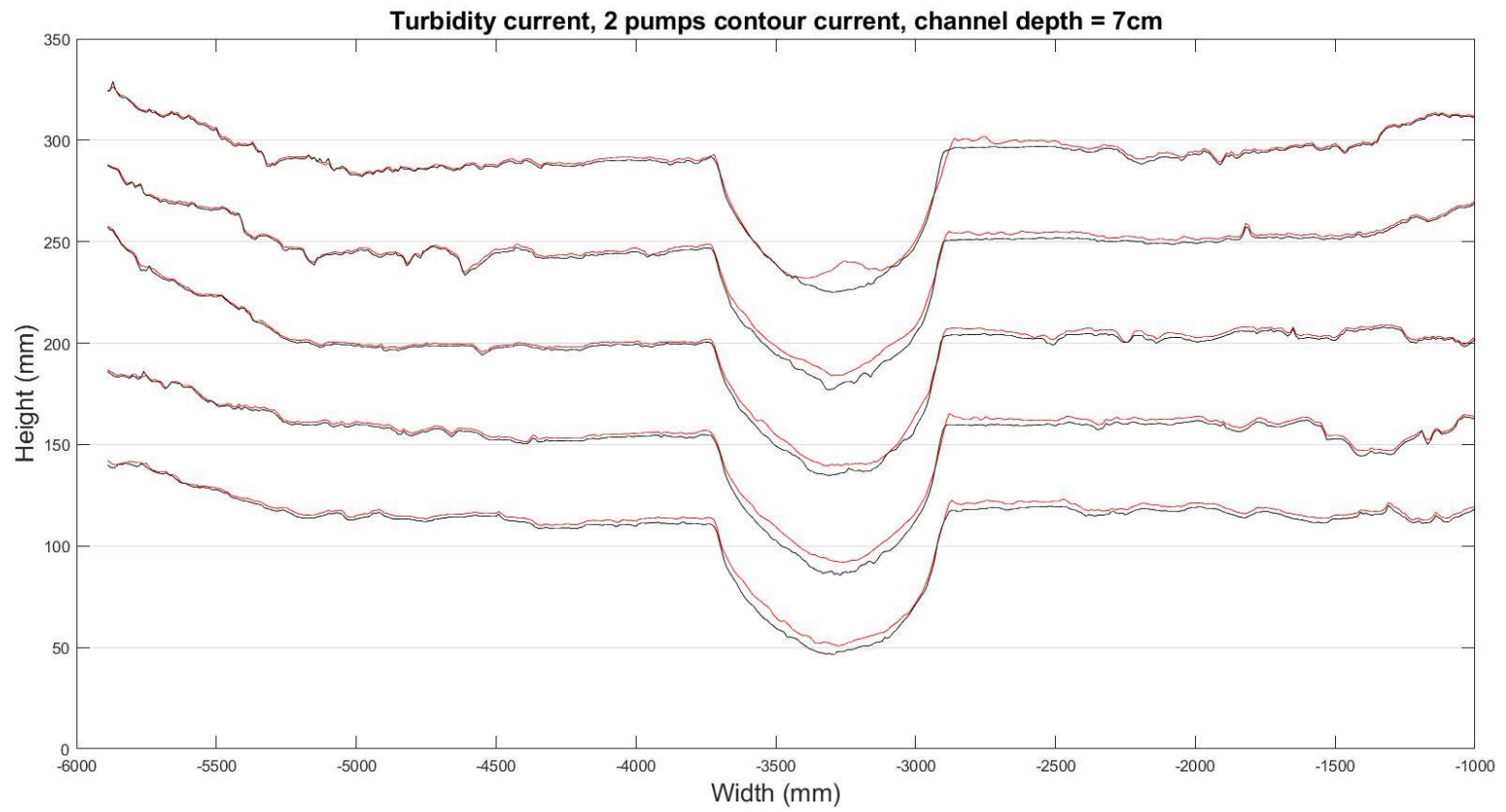


Figure 12, cross section of experiment with 2 pumps contour current and channel depth of 7 cm.

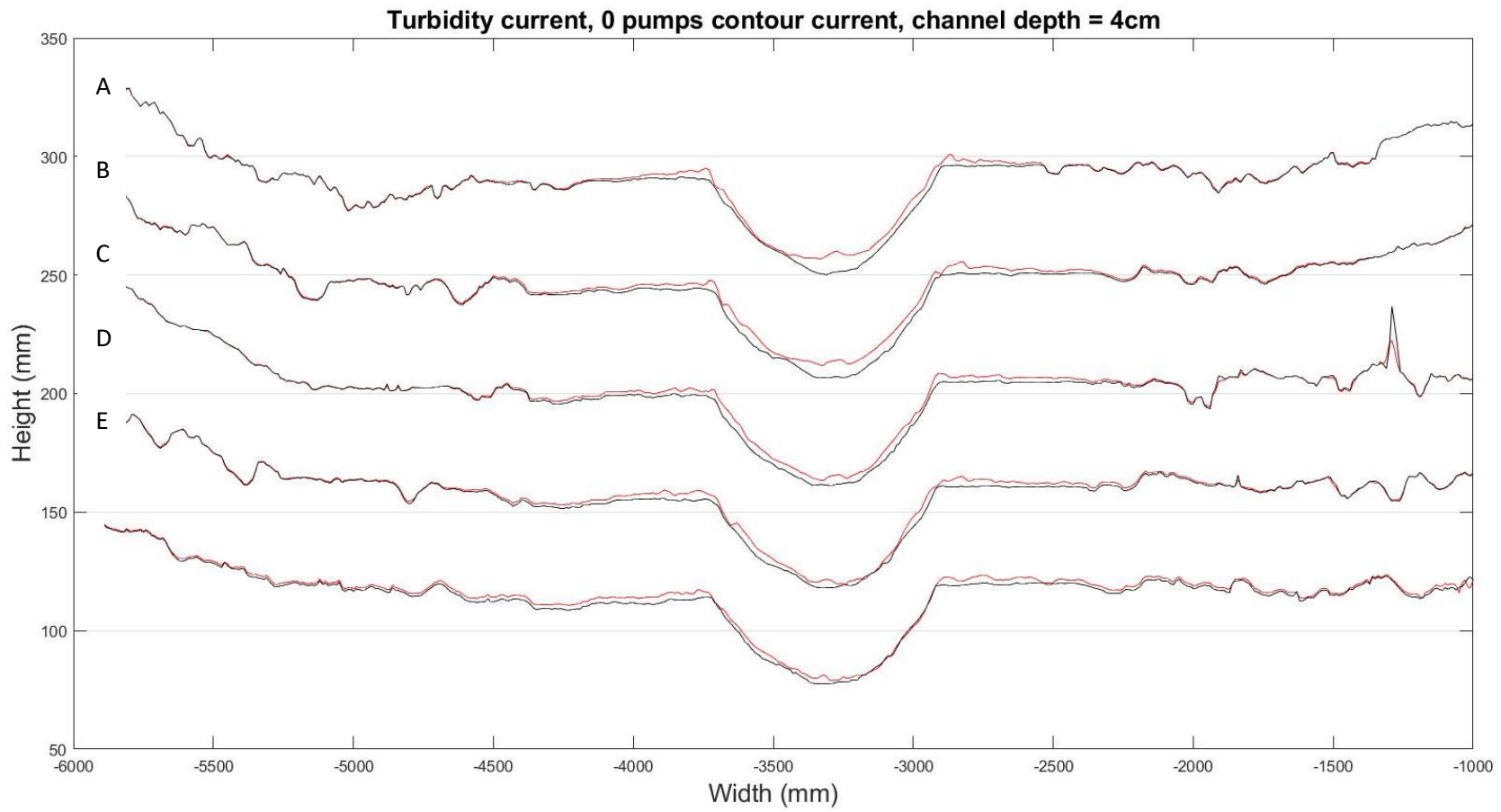


Figure 13, cross section of experiment with 0 pumps contour current and channel depth of 4 cm.

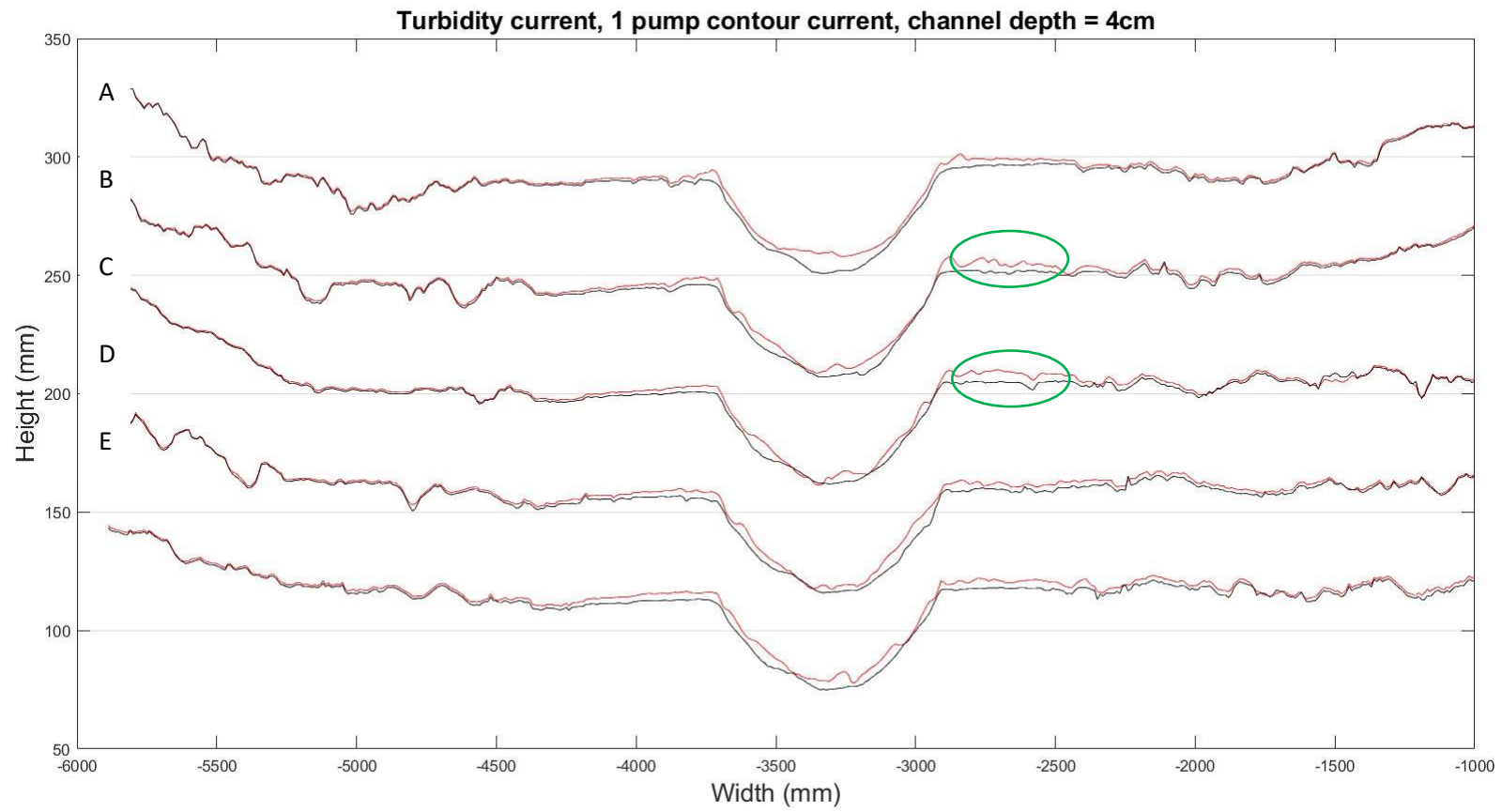


Figure 14, cross section of experiment with 1 pump contour current and channel depth of 4 cm.

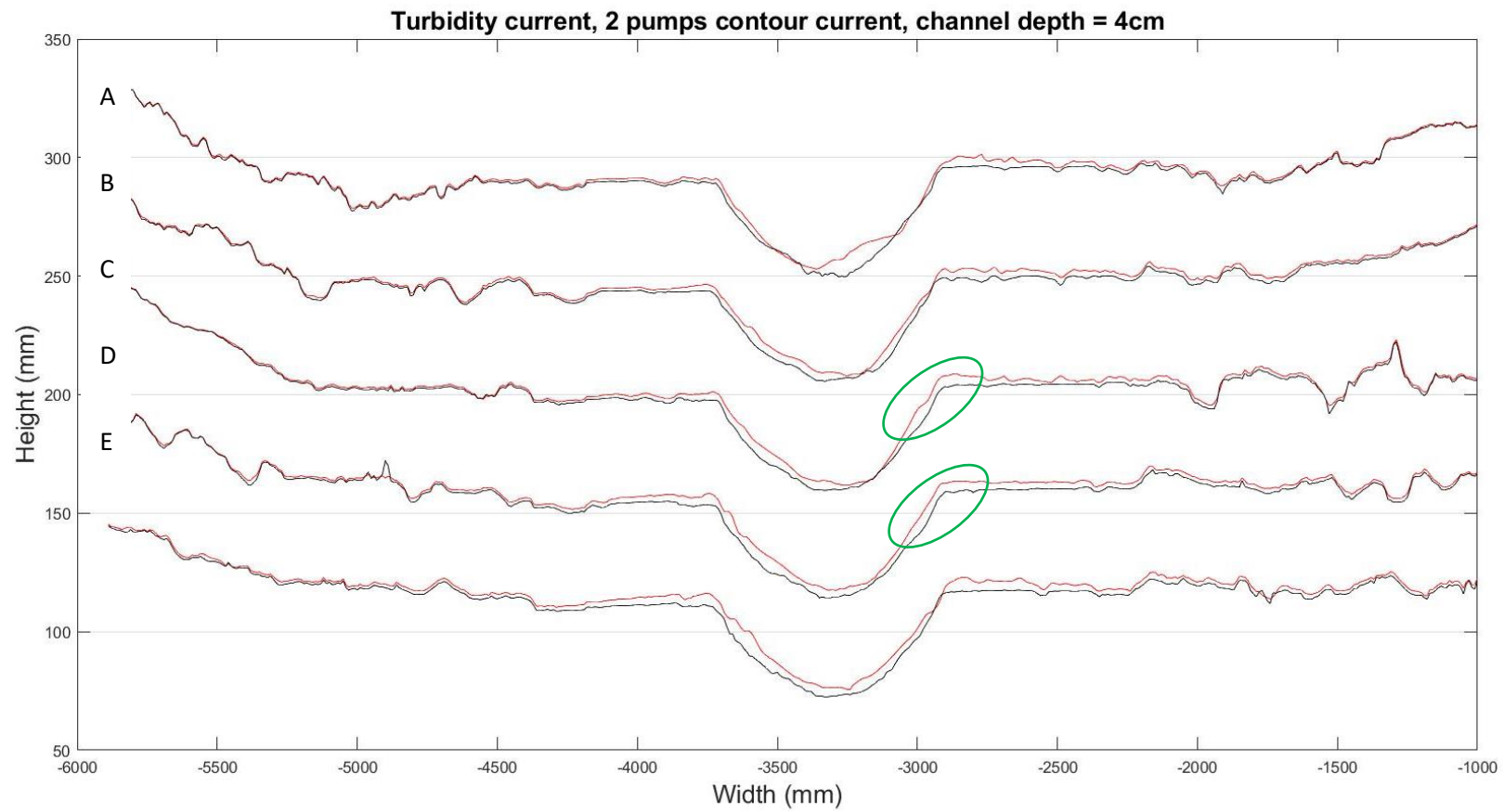


Figure 15, cross section of experiment with 2 pumps contour current and channel depth of 4 cm.